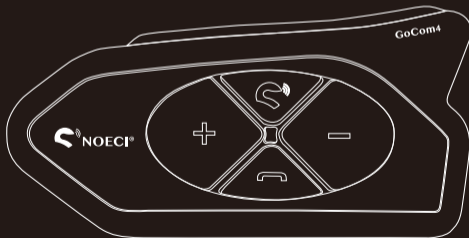


GoCom4

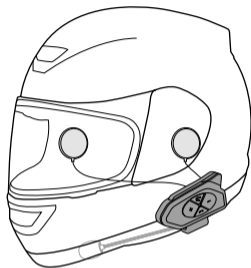
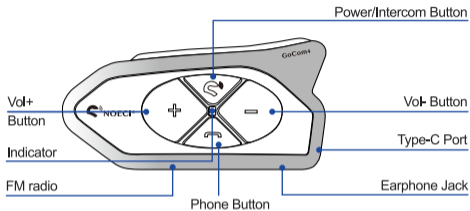
User Manual



MOTORCYCLE BLUETOOTH COMMUNICATION INTERCOM

1. ABOUT

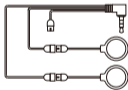
1.1 Product Details



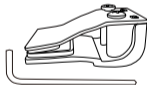
1.2 Package Contents



Headset Main Unit



HD Speaker



Helmet Mount & Hex Key



Velcro Helmet Mount



Wired Boom Mic



Wired Soft Mic



USB-C Charging Cable

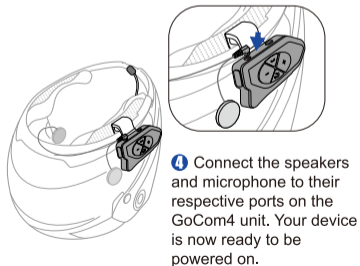
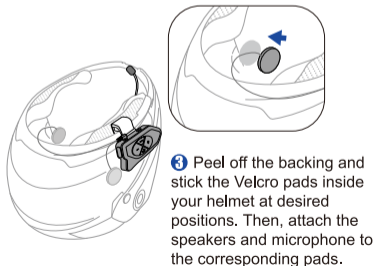
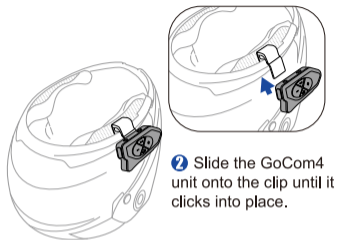
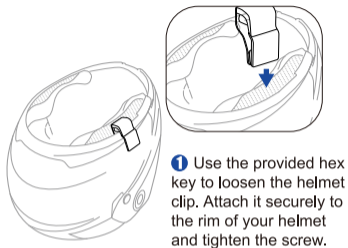


Velcro Pads * 4



User Manual

2. INSTALLATION



3. GET STARTED

3.1 Basic Operations



Single-click



Double-click



1s Long Press

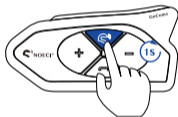


Press Simultaneously



5s Press Simultaneously

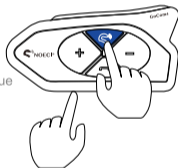
3.2 Power On/Off



Power On

? "Power on"

- The LED lights up blue

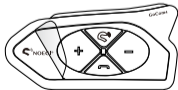


Power Off

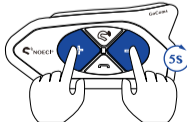
Press the *Power Button* and *FM Button* simultaneously.

- The LED turns off

3.3 Protective Film & Reset



Before using, you could peel off the protective film the device's front panel.

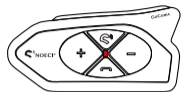


Factory Reset

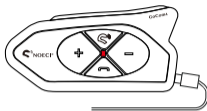
Press and hold the *Vol+ Button* and *Vol- Button* simultaneously for 5 seconds.

- The LED turns red for 2 seconds, then turns blue.

3.4 Low Battery Indication/Charging Indication



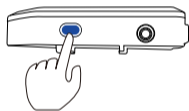
- The LED flashes red twice every two minutes



- Charging
 - The LED is solid red.
- Full-charged
 - The LED turns off.

4 FM Radio On/Off & Station Switchable

Once activated, FM mode will automatically scan for stations. Intercom and FM functions can operate simultaneously.

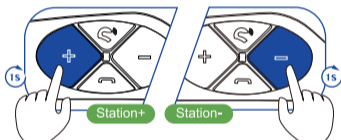


Single click to turn the FM radio on.

? "FM on"

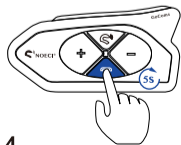
Single-click again to turn the FM off.

? "FM off"



5 PHONE FUNCTIONS

5.1 Phone Pairing



Press and hold the *Phone Button* for 5 seconds to enter the pairing mode.

? "Phone pairing"

- The LED flashes red and blue quickly.

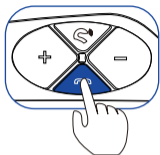


Enable Bluetooth on your mobile phone, search for and select *GoCom4* to pair

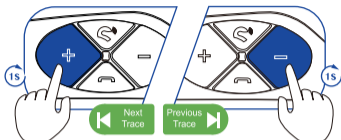
? "Pairing successful"

- The LED flashes blue slowly.

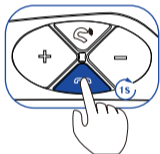
5.2 Music Playing



Single click the *Phone Button* to play or pause music.



5.3 Voice Assistant



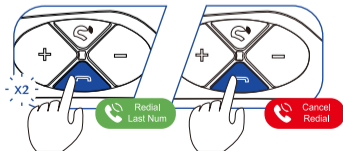
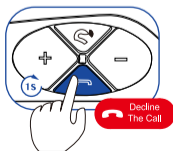
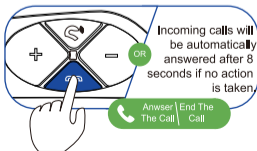
Press and hold the *Phone Button* for 1 second to activate your phone's voice assistant. (e.g., Siri or Google Assistant)



Speak to the microphone after the prompt.

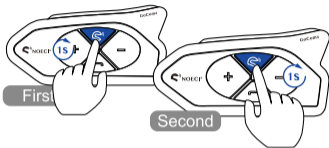


5.4 Phone Call Operations



6. INTERCOM PAIRING

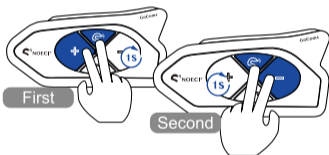
6.1 Two Intercom Pairing



- ❶ Power on both *GoCom4* units by pressing and holding the *Power Button* on each for 1 second.

? "Power on"

- The LED lights up blue



- ❷ On the *First* unit, press and hold the *Power* and *Vol+* buttons for 1 second. On the *Second* unit, press and hold the *Power* and *Vol+* buttons for 1 second. The two units will automatically search and pair.

? "Intercom A pairing"

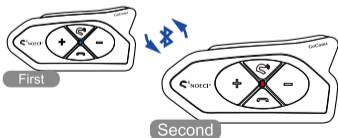
? "Pairing successful"

- The LED flashes red and blue quickly.

? "Intercom B pairing"

? "Pairing successful"

- The LED flashes red and blue quickly.



- ❸ Once connected, you can start communicating directly.

If pairing failed, reset both units (see Section 3.3) and repeat the process from Step 1.

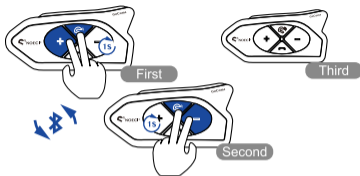
? "Intercom A connected"

- The LED flashes blue slowly.

? "Intercom B connected"

- The LED flashes red slowly.

6.2 Three Intercom Pairing



① Designate the three units as the “**First**”, “**Second**” and “**Third**”. Pair with “**First**” and “**Second**” units by following the exact same steps as in “**6.1 Two Intercom Pairing**”

? “Intercom A pairing”

? “Intercom B pairing”

? “Pairing successful”

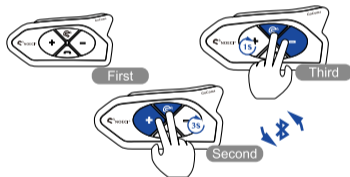
? “Pairing successful”

? “Intercom A connected”

? “Intercom B connected”

■ The LED flashes blue slowly.

■ The LED flashes red slowly.



② On the already-paired **Second** unit, press and hold the **Power** and **Vol+** buttons for 3 seconds. On the **Third** unit, press and hold the **Power** and **Vol-** buttons for 1 second. The **Second** and **Third** units will automatically search and pair.

? “Intercom A pairing”

? “Intercom B pairing”

? “Pairing successful”

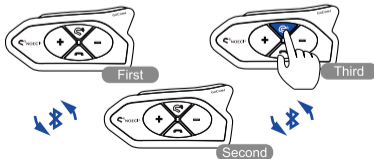
? “Pairing successful”

? “Intercom A connected”

? “Intercom B connected”

■ The LED flashes blue slowly.

■ The LED flashes red slowly.



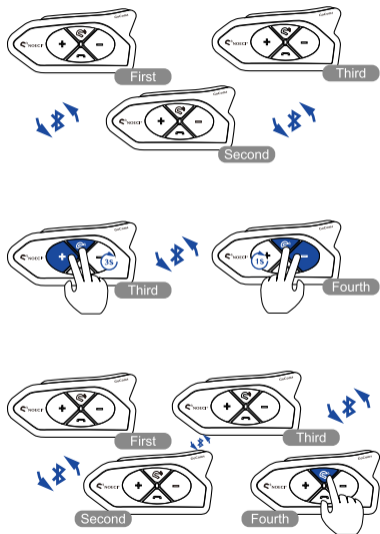
③ To connect **all** three units into one communication group. Single-press the **Power** button on any one of the three units. The three intercoms will automatically connect, enabling 3-way communication.

First: ■ The LED flashes blue slowly.

Second: ■ The LED flashes red and blue alternately slowly.

Third: ■ The LED flashes red slowly.

6.3 Four Intercom Pairing



① Designate the four units as **First**, **Second**, **Third**, and **Fourth**. Pair the “**First**”, “**Second**” and “**Third**” intercoms as a group, following the steps in “6.2 Three Intercom Pairing”.

Note: When following step 6.2, you do not need to perform the final step of pressing the Power button to form the three-unit group. Stop after the first two pairs are formed.

② On the **Third** unit, press and hold the **Power** and **Vol+** buttons for 3 seconds. On the **Fourth** unit, press and hold the **Power** and **Vol-** buttons for 1 second. The **Third** and **Fourth** units will automatically search and pair.

? “Intercom A pairing”

? “Intercom B pairing”

? “Pairing successful”

? “Pairing successful”

? “Intercom A connected”

? “Intercom B connected”

■ The LED flashes blue slowly.

■ The LED flashes red slowly.

③ To connect all four units into one communication group, single-press the **Power Button** on any one of the four units. The intercoms will automatically connect, enabling 4-way communication.

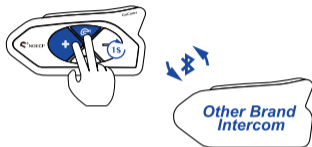
First: ■ The LED flashes blue slowly.

Second: ■ The LED flashes red and blue alternately slowly.

Third: ■ The LED flashes red and blue alternately slowly.

Fourth: ■ The LED flashes red slowly.

6.4 Pair with Other Brand Intercoms



1 Power on your **GoCom4**, Press and hold the **Power** and **Vol+** buttons simultaneously for 1 second.

? "Intercom A pairing"

■ The LED flashes red and blue quickly.

2 Put your other brand Bluetooth intercom into its universal pairing mode.
(please refer to its own user manual for instructions).

3 The **GoCom4** will automatically search and connect to the other intercom.

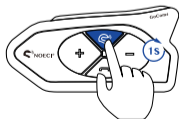
Note: If pairing is unsuccessful after multiple attempts, please contact the manufacturer of your other intercom to confirm it supports universal intercom pairing.

? "Pairing successful"

? "Intercom A connected"

■ The LED flashes blue slowly.

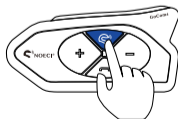
6.5 Intercom Disconnection & Reconnection



Disconnect

Long-press the **Power Button** for 1 second.

? "Intercom A disconnected"



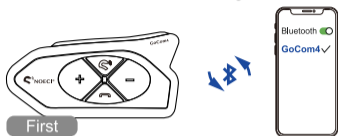
Reconnect

Single-press the **Power Button**.

? "Intercom A connected"

7. INTERCOM & PHONE MUSIC (Simultaneous Use)

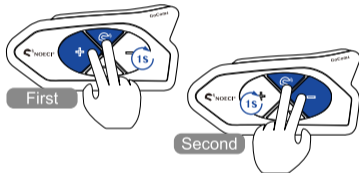
You can use the intercom while listening to music or navigation from your phone.



- 1 Ensure your GoCom4 is already paired with your phone (see [5.1 Phone Pairing](#)).

? "Phone pairing"

■ The LED flashes red and blue quickly.



- 2 Pair with another GoCom4 unit for intercom communication (see [6.1 Pairing Two GoCom4 Units](#)).

? "Intercom A connected"

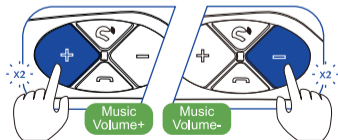
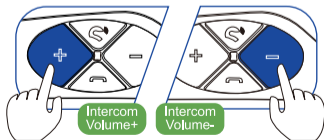
? "Intercom B connected"

■ The LED flashes blue slowly.

■ The LED flashes red slowly.

- 3 Once both connections are active, you can enjoy intercom communication and phone audio simultaneously.

Tip: If you have already paired the intercoms first, you may need to temporarily disconnect the intercom to pair with your phone, then reconnect it to enjoy both functions.

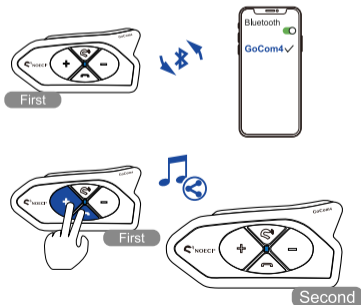


8. AUDIO SHARING (Ideal for driver and passenger)



8.1 Basic Audio Sharing

(You can use the intercom while listening to music or navigation from your phone.)



1 Pair one GoCom4 (**First**) with your cellphone and start playing music.

2 Pair a second GoCom4 (**Second**) with the First unit using the standard two-unit intercom pairing (see 6.1).

3 On the **First** unit (the one connected to the phone), press the **Vol+** and **Phone** buttons simultaneously to turn on the audio sharing function. Once the **Second** unit hear "Audio share," both users can now hear the same music/audio.

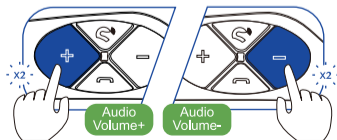
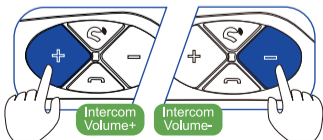
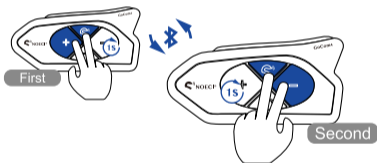
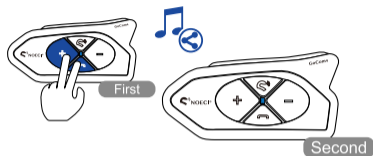
? "Audio share"

■ The LED flashes blue slowly.

? "Du Du"

■ The LED flashes blue slowly.

8.2 Audio Sharing & Two Intercom Talking



① Establish Audio Sharing between two units as described in 8.1 *Basic Audio Sharing*.

② Follow the step of 6.1 *Two Intercom Pairing* to pair both GoCom4 units and start intercom communication.

When two units get intercom mode paired, the audio sharing functions would be paused, you shall press the *Phone Button* again to play it.

? "Intercom A pairing"

? "Intercom B pairing"

? "Intercom A connected"

? "Intercom B connected"

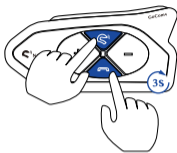
■ The LED flashes blue slowly.

■ The LED flashes red slowly.

③ You can also choose to establish the intercom connection first, and then pair with your cellphone to enable the audio sharing function.

Tip: The order of operations is flexible. You can also choose to start an intercom call first, and then pair with your phone to enable audio sharing.

9. REMOTE CONTROL PAIRING (Ntrol)



- 1 On your GoCom4, press and hold the *Power Button* and the *Phone Button* for 3 seconds until the LED flashes red and blue.
 - The LED flashes red and blue quickly.
- 2 Ensure your Ntrol remote control is in its intercom pairing mode (refer to the Ntrol user manual for instructions).
- 3 The GoCom4 will automatically search and pair with the Ntrol.
 - The LED flashes blue slowly.

10. WARNINGS

Please read and understand the following warnings to ensure your safety and the safety of others.

Awareness: Using this device will reduce your awareness of ambient sounds (e.g., traffic, sirens, horns). Always remain alert to your surroundings while riding.

Distraction: Listening to music or engaging in communication can distract you and prevent you from hearing important traffic cues. This could endanger you and others. The use of such devices while riding may be restricted in some areas.

Hearing Loss: Permanent hearing loss may occur if you listen to audio at high volumes for extended periods.

Safe Listening:

- If you experience ringing in your ears (tinnitus) or any discomfort, reduce the volume or stop using the device immediately.
- Continuous exposure to high volume can make your ears accustomed to the sound level, leading to permanent damage without you noticing.
- Always use this device at a safe volume level.

11. COMPLIANCE

11.1 FCC Statement (USA)

This device complies with Part 15 of the FCC Rules. Operation is subject to the following two conditions:

- (1) this device may not cause harmful interference, and
- (2) this device must accept any interference received, including interference that may cause undesired operation.

This equipment has been tested and found to comply with the limits for a Class B digital device, pursuant to part 15 of the FCC Rules. These limits are designed to provide reasonable protection against harmful interference in a residential installation. This equipment generates, uses and can radiate radio frequency energy and, if not installed and used in accordance with the instructions, may cause harmful interference to radio communications. However, there is no guarantee that interference will not occur in a particular installation.

If this equipment does cause harmful interference to radio or television reception, which can be determined by turning the equipment off and on, the user is encouraged to try to correct the interference by one or more of the following measures:

- Reorient or relocate the receiving antenna.
- Increase the separation between the equipment and receiver.
- Connect the equipment into an outlet on a circuit different from that to which the receiver is connected.
- Consult the dealer or an experienced radio/TV technician for help.

Changes or modifications not expressly approved by the party responsible for compliance could void the user's authority to operate the equipment.

11.2 IC Statement (Canada)

This device contains licence-exempt transmitter(s)/receiver(s) that comply with Innovation, Science and Economic Development Canada's licence-exempt RSS(s). Operation is subject to the following two conditions:

- (1) This device may not cause interference.
- (2) This device must accept any interference, including interference that may cause undesired operation of the device.

L'émetteur/récepteur exempt de licence contenu dans le présent appareil est conforme aux CNR d'Innovation, Sciences et Développement économique Canada applicables aux appareils radio exempts de licence. L'exploitation est autorisée aux deux conditions suivantes :

- (1) L'appareil ne doit pas produire de brouillage;
- (2) L'appareil doit accepter tout brouillage radioélectrique subi, même si le brouillage est susceptible d'en compromettre le fonctionnement.

12. WARRANTY

This product is covered by a one-year limited warranty from the date of purchase under normal use. The warranty will be void if the unit has been disassembled, modified, or if the serial number is missing or illegible.

13. IMPORTANT NOTES

Helmet Modification Warning: Installing this equipment on your helmet constitutes a modification. This may void the helmet's manufacturer warranty and could potentially impair its protective function. Use at your own risk and understanding.

Secure Mounting: Before every ride, ensure the product is firmly and correctly mounted on your helmet. A product falling off during riding can cause an accident or injury.

Riding Safety: Always prioritize safety. Use this product with caution to avoid distractions that could lead to serious injury or death.

Communication Range: For best intercom range, use in open areas without obstructions.

Water Resistance: In rainy conditions, ensure the device is mounted with its ports facing downwards and that the USB rubber plug is sealed tightly. Always ensure all jack connectors are fully inserted to prevent water ingress.

Battery Performance: Battery capacity and life will decrease in low temperatures, particularly below 0°C (32°F).

Troubleshooting: If the device malfunctions, power it off and on again as a first step.

Vehicle Operation: When using this product while operating a vehicle, you must always observe the vehicle manufacturer's safety precautions and local traffic laws.